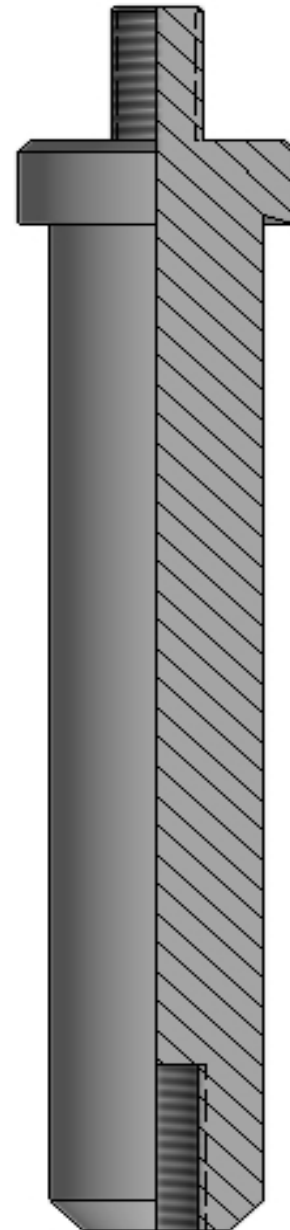




B PROBE

ASSEMBLY DESCRIPTION

The B Probe is a wireline manipulated device that is used to close the two locking dogs on a B & T W Lock or B & T Z Lock in order to remove it from the Landing Nipple.





B PROBE

SPECIFICATIONS			
	1.250	1.500	2.000
Maximum O.D.	0.496	0.698	0.832
Pin Connection	3/8"-16	1/2"-13	1/2"-13
Bottom Connection	1/4"-20	7/16"-14	1/2"-13
Overall Length	6.281	6.281	7.094

SPECIFICATIONS			
	2.500	3.000	4.500
Maximum O.D.	1.137	1.387	2.031
Pin Connection	1/2"-13	5/8"-11	1-1/4"-12
Bottom Thread	1/2"-13	5/8"-11	5/8"-11
Overall Length	7.219	7.750	8.500

All Specification Tables contain approximated dimensions and should be used for reference only.