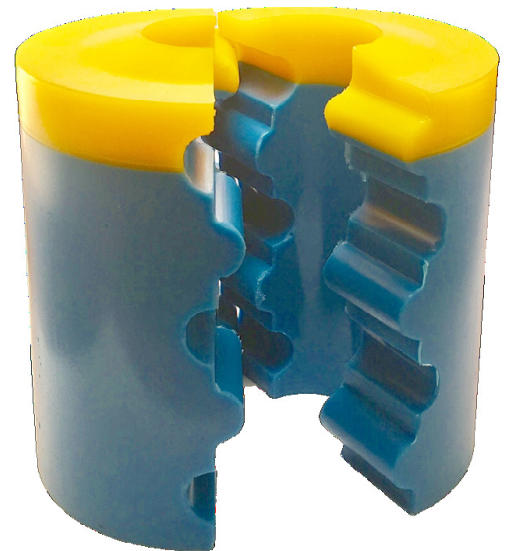




COILED TUBING STRIPPER

ASSEMBLY DESCRIPTION

B & T provides many Coiled Tubing Stripper products to suit your needs including Red/Green and Yellow/Blue as well as energizers and Non-Extrusion Rings. B & T also provides Swivel Packing Kits and Face Seals.





COILED TUBING STRIPPER

SPECIFICATIONS	
Part Number	Description
0848-1971-1	1-1/2" Face Seal
0848-2006-1	2" Facel Seal HSN
1" 3-1/2" CT Stripper YB	1" X 3-1/2" CT Stripper YB
1" X 3-1/2" Non-Extrusion Ring	Teflon Non-Extrusion Ring
1" X 4-1/16" CT Stripper YB	1" X 4-1/16" CT Stripper YB
1-1/2" Swivel Packing Kit -15K	1-1/2" Swivel Packing Kit -15K
1-1/2" X 3-1/16" CT Stripper RG	1-1/2" X 3-1/16" CT Stripper RG
1-1/2" X 3-1/16" Non-Extrusion Ring	Teflon Non-Extrusion Ring
1-1/2" X 3-1/16" X 3/4" TFE Non-Ext	Non-Extrusion Ring
1-1/2" X 3-1/2" CT Stripper YB	1-1/2" X 3-1/2" CT Stripper
1-1/2" X 3-1/2" Non-Extrusion Ring	Teflon Non-Extrusion Ring
1-1/2" X 4" CT Stripper RB	1-1/2" X 4-1/16" CT Stripper RB
1-1/2" X 4" Non-Extrusion Ring	Teflon Non-Extrusion Ring
1-1/2" X 4-1/16" CT Stripper RG	Coil Tubing Stripper 95/80
1-1/2" X 4-1/16" CT Stripper YB	1-1/2" X 4-1/16" CT Stripper YB
1-1/2" X 4-1/16" Non-Extrusion Ring	Teflon Non-Extrusion Ring
1-1/2" X 5-1/2" CT Stripper YB	1-1/2" X 5-1/2" CT Stripper YB
1-1/2" X 5-1/2" Non-Extrusion Ring	Teflon Non-Extrusion Ring
1-1/2" X 5-1/2" X 3/4" TFE Non-Ext	Teflon Non-Extrusion Ring
1-1/4" CT Urethane Pig Balls	1-1/4" CT Urethane Pig Balls
1-1/4" 3-1/16" CT Stripper RG	1-1/4" X 3-1/16" CT Stripper RG
1-1/4" X 3-1/16" Non-Extrusion Ring	Teflon Non-Extrusion Ring
1-1/4" X 3-1/2" CT Stripper RG	1-1/4" X 3-1/2" CT Stripper RG
1-1/4" X 3-1/2" CT Stripper YB	1-1/4" X 3-1/2" CT Stripper
1-1/4" X 3-1/2" Non-Extrusion Ring	Teflon Non-Extrusion Ring
1-1/4" X 4" Non-Extrusion Ring	Teflon Non-Extrusion Ring
1-1/4" X 4-1/16" CT Stripper RG	Coil Tubing Stripper 95/80
1-1/4" X 4-1/16" CT Stripper YB	1-1/4" X 4-1/16" CT Stripper YB
1-1/4" X 4-1/16" Non-Extrusion Ring	Teflon Non-Extrusion Ring

All Specification Tables contain approximated dimensions and should be used for reference only.