



## GO DEVIL

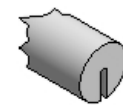
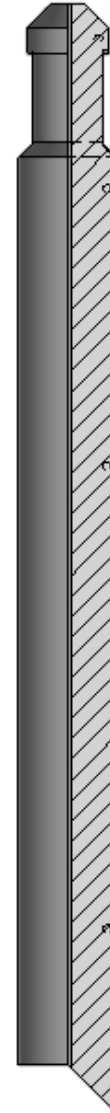
### ASSEMBLY DESCRIPTION

The Go Devil is dropped to cut the wireline at the Rope Socket when the tool string becomes stuck. B & T manufactures three types of Go Devils in order to accommodate to customer's tubing specifications.

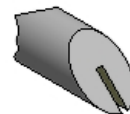
The Mule Shoe style is used when there is liquid present to slow the Go Devil as it descends. This style can also utilize sliding sleeves to keep the tool centered in the tubing.

The Deer Foot style is used when there is only gas present. The Deer Foot style is manufactured to remain in the center of the tubing, even after striking and releasing the Rope Socket.

The Flat Bottom style is used when there is sand or a large amount of debris present so as to drastically reduce the speed of the Go Devil as it descends.



Flat Bottom



Mule Shoe



Deer Foot