



## HLWA OPEN HOLE PACKOFF

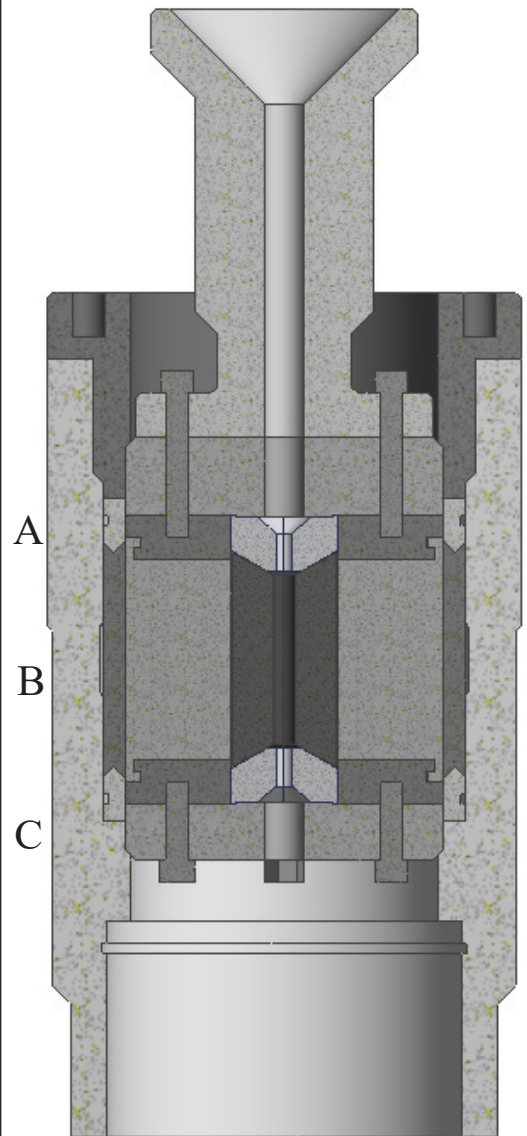
### ASSEMBLY DESCRIPTION

B & T manufactures the following components compatible with the HLWA Open Hole Packoff:

- A) HLWA PTFE
- B) HLWA PACKOFF RUBBER
- C) HLWA PTFE

Upper and Lower HLWA PTFE are sold in numbered, matched sets to ensure true line size and seal. Please note, to order an entire HLWA PTFE redress, you will need (2) complete sets, one upper and one lower.

HLWA Packoff Rubbers are available in the full range of materials offered by B & T. Please consult the Elastomer Chart to find the proper compound for your specific application. The standard compound suitable for most applications is NBR 80.





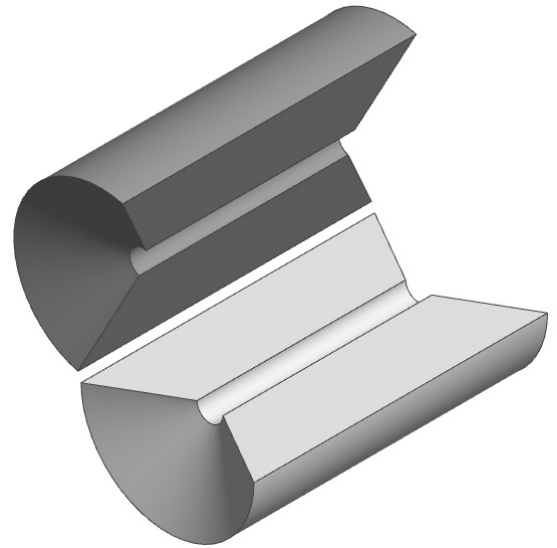
## HLWA PACKOFF RUBBER

### ASSEMBLY DESCRIPTION

O.D.            3.300"  
Length         5.600"

Mold # -Line Size-Compound  
**0340-XXXX-XXXX**

When ordering the HLWA Packoff Rubber use the prefix **0340** and please specify: line size and compound. Example: 3/8" NBR 80 Duro would be part number **0340-0008-0808**.



### SPECIFICATIONS

#### HLWA Open Hole Packoff Parts: A and C

Line Size	Line Size Part No.	Compound	NBR 80 Duro	HNBR 65 Duro	HNBR 80 Duro	FKM 80 Duro	Epichlorohydrin 70 Duro
3/8"	0008		0808	8465	0848	0708	1307
1/2"	0011		0808	8465	0848	0708	1307
9/16"	0013		0808	8465	0848	0708	1307

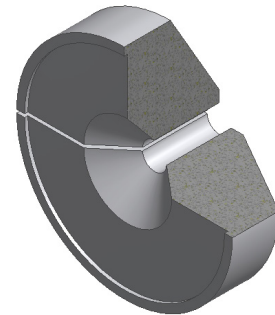
All Specification Tables contain approximated dimensions and should be used for reference only.



## HLWA PTFE

### ASSEMBLY DESCRIPTION

O.D. 3.375"  
Length 1.480"



1/4 Cutaway View

### SPECIFICATIONS

#### HLWA Open Hole Packoff Part: B

Part Number	Line Size	Material
HLAT-0008-14	3/8"	PTFE
HLAT-0011-14	1/2"	PTFE
HLAT-0013-14	9/16"	PTFE

All Specification Tables contain approximated dimensions and should be used for reference only.