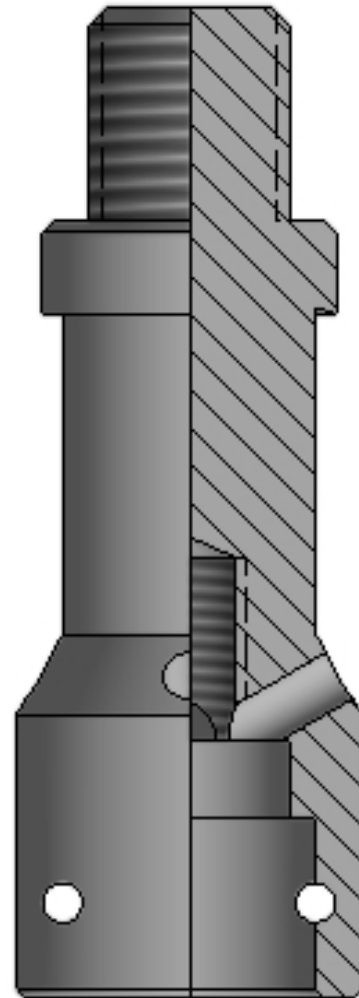




J RUNNING TOOL

ASSEMBLY DESCRIPTION

The J Running Tool is used to set B & T S Locks.





J RUNNING TOOL

SPECIFICATIONS			
	1.250	1.500	2.000
Fishneck	1.000	1.188	1.375
Maximum O.D.	1.125	1.420	1.625
Pin Connection	5/8"-11	15/16"-10	15/16"-10
Bottom Connection	3/8"-16	3/8"-16	1/2"-13
Length	2.375	3.500	3.688
Shear Pins	1/8" X 1-1/16"	1/8" X 1-3/8"	3/16" X 2-1/16"

SPECIFICATIONS			
	2.500	3.000	4.000
Fishneck	1.375	2.313	2.313
Maximum O.D.	2.125	2.500	3.500
Pin Connection	15/16"-10	1-1/16"-10	1-1/16"-10
Bottom Connection	1/2"-13	5/8"-11	1-1/4"-12
Length	3.688	4.625	5.063
Shear Pins	3/16" X 2-1/16"	3/16" X 2-1/16"	3/16" X 3-7/16"

All Specification Tables contain approximated dimensions and should be used for reference only.