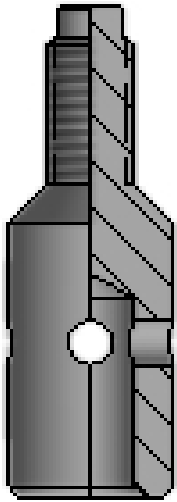




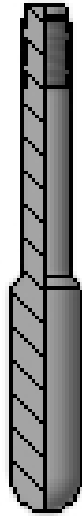
PRONG SPECIFICATIONS



B & T DK
Running Prong



B & T DK
Pulling Prong



B & T
P Prong



B & T R/
B & T X
Running
Prong



B & T R/
B & T X
Pulling
Prong



PRONG SPECIFICATIONS

SPECIFICATIONS						
Nominal Size	Mandrel	Equalizing Sub	Prong	O.D.	Length	Thread
2.000	S	B	P-100	1/2"	21-3/8"	1/2"-13
		D	P-100	1/2"	21-3/8"	1/2"-13
		H	P-479	21/32"	21-3/8"	1/2"-13
	T	B	P-100	1/2"	21-3/8"	1/2"-13
		D	P-100	1/2"	21-3/8"	1/2"-13
		H	P-479	21/32"	21-3/8"	1/2"-13
	B	B	P-102	1/2"	20-3/4"	1/2"-13
		D	P-102	1/2"	20-3/4"	1/2"-13
		H	P-474	21/32"	19-3/16"	1/2"-13
	W	B	P-501	1/2"	22-7/8"	1/2"-13
		D	P-501	1/2"	22-7/8"	1/2"-13
		H	P-474	21/32"	19-3/16"	1/2"-13
	N	B	P-146	1/2"	16-7/8"	1/2"-13
		D	P-146	1/2"	16-7/8"	1/2"-13
		H	P-479	1/2"	16-7/8"	1/2"-13
	X	B Running	P-100	1/2"	9-5/8"	1/2"-13
		D Running	P-100	1/2"	9-5/8"	1/2"-13
		B Pulling	P-100	1/2"	16-1/2"	1/2"-13
		D Pulling	P-100	1/2"	16-1/2"	1/2"-13
		H Running	P-479	21/32"	9-5/8"	1/2"-13
		H Pulling	P-479	21/32"	16-1/2"	1/2"-13
	D-Collar Lock	B	P-100	1/2"	17-1/2"	1/2"-13
		D	P-100	1/2"	17-1/2"	1/2"-13
		H	P-479	21/32"	17-1/2"	1/2"-13

All Specification Tables contain approximated dimensions and should be used for reference only.



PRONG SPECIFICATIONS

SPECIFICATIONS						
Nominal Size	Mandrel	Equalizing Sub	Prong	O.D.	Length	Thread
2.500	S	B	P-242	11/16"	22-1/2"	1/2"-13
		D	P-242	11/16"	22-1/2"	1/2"-13
		H	P-145	27/32"	22-1/2"	1/2"-13
	T	B	P-242	11/16"	22-1/2"	1/2"-13
		D	P-242	11/16"	22-1/2"	1/2"-13
		H	P-145	27/32"	22-1/2"	1/2"-13
	B	B	P-104	11/16"	21-5/8"	1/2"-13
		D	P-104	11/16"	21-5/8"	1/2"-13
		H	P-150	27/32"	20-3/8"	1/2"-13
	W	B	P-242	11/16"	21-1/2"	1/2"-13
		D	P-242	11/16"	21-1/2"	1/2"-13
		H	P-480	27/32"	21-3/4"	1/2"-13
	N	B	P-610	11/16"	15-1/4"	1/2"-13
		D	P-610	11/16"	15-1/4"	1/2"-13
		H	P-400	27/32"	14-3/32"	1/2"-13
	X	B Running	P-242	11/16"	7-1/2"	5/8"-11
		D Running	P-242	11/16"	7-1/2"	5/8"-11
		B Pulling	P-242	11/16"	17-1/2"	5/8"-11
		D Pulling	P-242	11/16"	17-1/2"	5/8"-11
		H Running	P-480	27/32"	7-1/2"	5/8"-11
		H Pulling	P-480	27/32"	17-1/2"	5/8"-11
	D-Collar Lock	B	P-242	11/16"	20"	1/2"-13
		D	P-242	11/16"	20"	1/2"-13
		H	P-480	27/32"	20"	1/2"-13

All Specification Tables contain approximated dimensions and should be used for reference only.



PRONG SPECIFICATIONS

SPECIFICATIONS						
Nominal Size	Mandrel	Equalizing Sub	Prong	O.D.	Length	Thread
3.000	S	B	P-141	1-1/8"	23-3/8"	5/8"-11
		D	P-141	1-1/8"	23-3/8"	5/8"-11
		H	P-481	1-15/32"	22-3/8"	5/8"-11
	T	B	P-141	1-1/8"	23-3/8"	5/8"-11
		D	P-141	1-1/8"	23-3/8"	5/8"-11
		H	P-481	1-15/32"	22-3/8"	5/8"-11
	B	B	P-148	1-1/8"	21-13/16"	5/8"-11
		D	P-148	1-1/8"	21-13/16"	5/8"-11
		H	P-476	1-1/8"	21-13/16"	5/8"-11
	W	B	P-141	1-1/8"	23-3/8"	5/8"-11
		D	P-141	1-1/8"	23-3/8"	5/8"-11
		H	P-481	1-15/32"	23-3/8"	5/8"-11
	N	B	P-141	1-1/8"	15"	5/8"-11
		D	P-141	1-1/8"	15"	5/8"-11
		H	P-572	1-15/32"	15"	5/8"-11
	X	B Running	P-141	1-1/8"	8"	3/4"-10
		D Running	P-141	1-1/8"	8"	3/4"-10
		B Pulling	P-141	1-1/8"	19"	5/8"-11
		D Pulling	P-141	1-1/8"	19"	5/8"-11
		H Running	P-572	1-15/32"	8"	3/4"-10
		H Pulling	P-572	1-15/32"	19"	5/8"-11
	D-Collar Lock	B	P-141	1-1/8"	19"	5/8"-11
		D	P-141	1-1/8"	19"	5/8"-11
		H	P-572	1-15/32"	19"	5/8"-11

All Specification Tables contain approximated dimensions and should be used for reference only.



NOTES

QUICK EMAILS

Broussard, Louisiana Office:
Anchorage, Alaska Office:
Alvin, Texas Office:
Odessa, Texas Office:
Sales Manager:
Shipping Manager:
Quality Control Manager:

Russell Shirley
Matt Conley
Jason Durham
Robert Scheef
Randy English
Matt Merritt
Jeremy Feucht

russell.shirley@btoilfield.com
btopak@gmail.com
jason.durham@btoilfield.com
robert.scheef@btoilfield.com
btoprandy@hotmail.com
matt.merritt@btoilfield.com
jeramy.feucht@btoilfield.com

BROUSSARD, LOUISIANA
(337) 837-5359

ALVIN, TEXAS
(281) 756-8716

ODESSA, TEXAS
(432) 614-4634

ANCHORAGE, ALASKA
(907) 272-7817