



TYPE C PACKOFF

ASSEMBLY DESCRIPTION

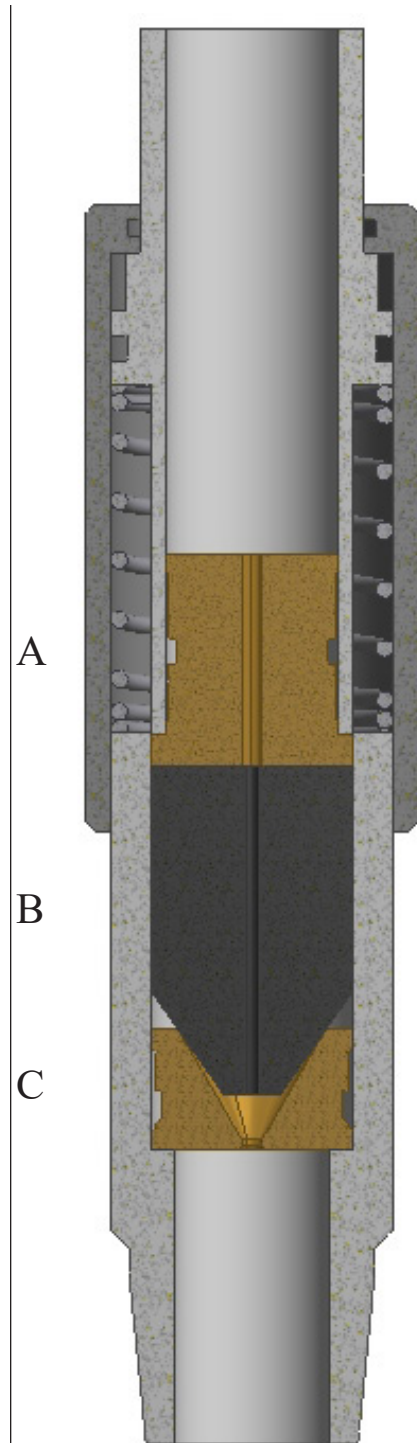
B & T manufactures the following components compatible with the Type C Packoff:

- A) TYPE C UPPER BRASS
- B) TYPE C LINE WIPER
- C) TYPE C LOWER BRASS

B & T produces Type C components from high quality machined brass which gives them superior wear characteristics. Our brass components also cover a range of common line sizes giving the user maximum flexibility while lowering the amount of inventory that must be kept on hand.

The Type C Line Wiper is available in the full range of materials offered by B & T. Please consult the Elastomer Chart to find the proper compound for your specific application. The standard compound suitable for most applications is SBR/Natural 50. If a slightly harder rubber is desired with the same chemical characteristics, we recommend the standard NBR 60 material.

PLEASE NOTE: Many parts for the Type C, Type CL, MT, and 410 injection heads are shared between different styles, part numbers are listed for each style to avoid confusion. To check cross compatibility, please see the Cross Compatibility Chart.

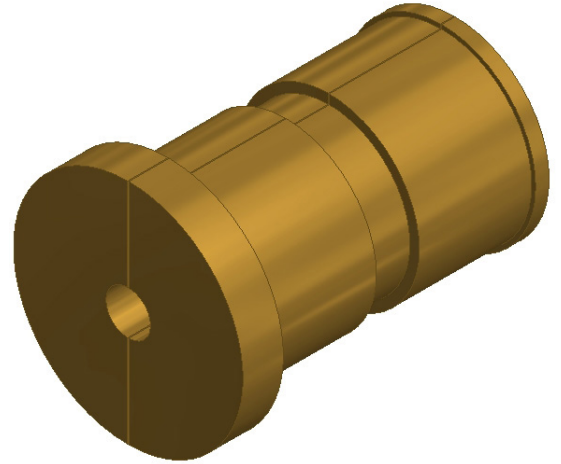




TYPE C UPPER BRASS

ASSEMBLY DESCRIPTION

O.D.	2.125"
Length	3.030"



SPECIFICATIONS

Type C Packoff Part: A

Part Number	Line Size	Material
CUB-0014-05	9/32"-3/8"*	Brass
CUB-0015-05	3/16"-1/4"*	Brass
CUB-0003-05	7/32"	Brass
CUB-0005-05	9/32"	Brass
CUB-0006-05	5/16"	Brass
CUB-0008-05	3/8"	Brass
CUB-0009-05	7/16"	Brass
CUB-0011-05	1/2"	Brass

*These line size ranges are what are specified by OEM equipment. We also make specific line sizes if your application requires it.

All Specification Tables contain approximated dimensions and should be used for reference only.



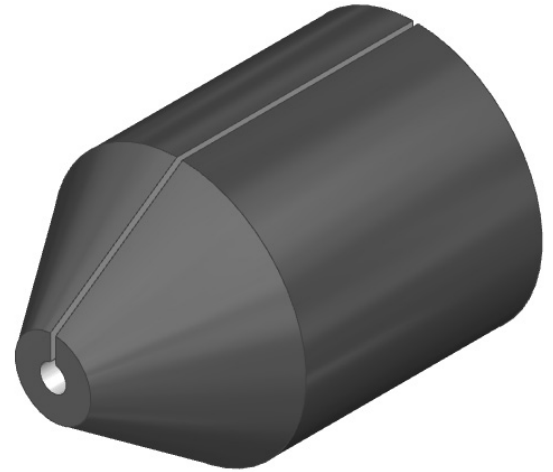
TYPE C LINE WIPER

ASSEMBLY DESCRIPTION

O.D. 2.100"
Length 3.000"

Mold # -Line Size-Compound
0346-XXXX-XXXX

When ordering the Type C Line Wiper use the prefix **0346** and please specify: line size and compound. Example: 3/16" SBR/Natural 50 Duro would be part number **0346-0002-3105**



SPECIFICATIONS

Type C Packoff Part: B

Line Size	Line Size Part No.	Compound	SBR/Natural 50 Duro	NBR 60 Duro	HNBR 65 Duro	HNBR 80 Duro	FKM 70 Duro	Aflas 80 Duro	Epichlorohydrin 70 Duro
3/16"	0002		3105	0806	8465	0848	0707	0408	1307
7/32"	0003		3105	0806	8465	0848	0707	0408	1307
1/4"	0004		3105	0806	8465	0848	0707	0408	1307
9/32"	0005		3105	0806	8465	0848	0707	0408	1307
5/16"	0006		3105	0806	8465	0848	0707	0408	1307
3/8"	0008		3105	0806	8465	0848	0707	0408	1307
7/16"	0009		3105	0806	8465	0848	0707	0408	1307
1/2"	0011		3105	0806	8465	0848	0707	0408	1307

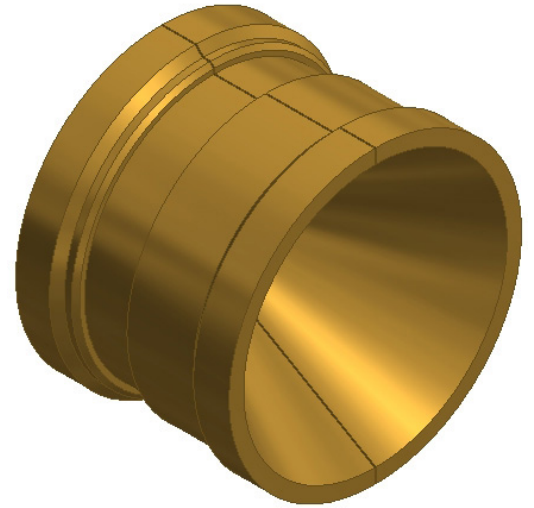
All Specification Tables contain approximated dimensions and should be used for reference only.



TYPE C LOWER BRASS

ASSEMBLY DESCRIPTION

O.D.	2.125"
Length	1.550"



SPECIFICATIONS

Type C Packoff Part: C

Part Number	Line Size	Material
CLLB-0014-05	9/32"-3/8"*	Brass
CLLB-0015-05	3/16"-1/4"*	Brass
CLLB-0003-05	7/32"	Brass
CLLB-0005-05	9/32"	Brass
CLLB-0006-05	5/16"	Brass
CLLB-0008-05	3/8"	Brass
CLLB-0009-05	7/16"	Brass
CLLB-0011-05	1/2"	Brass

*These line size ranges are what are specified by OEM equipment. We also make specific line sizes if your application requires it.

All Specification Tables contain approximated dimensions and should be used for reference only.